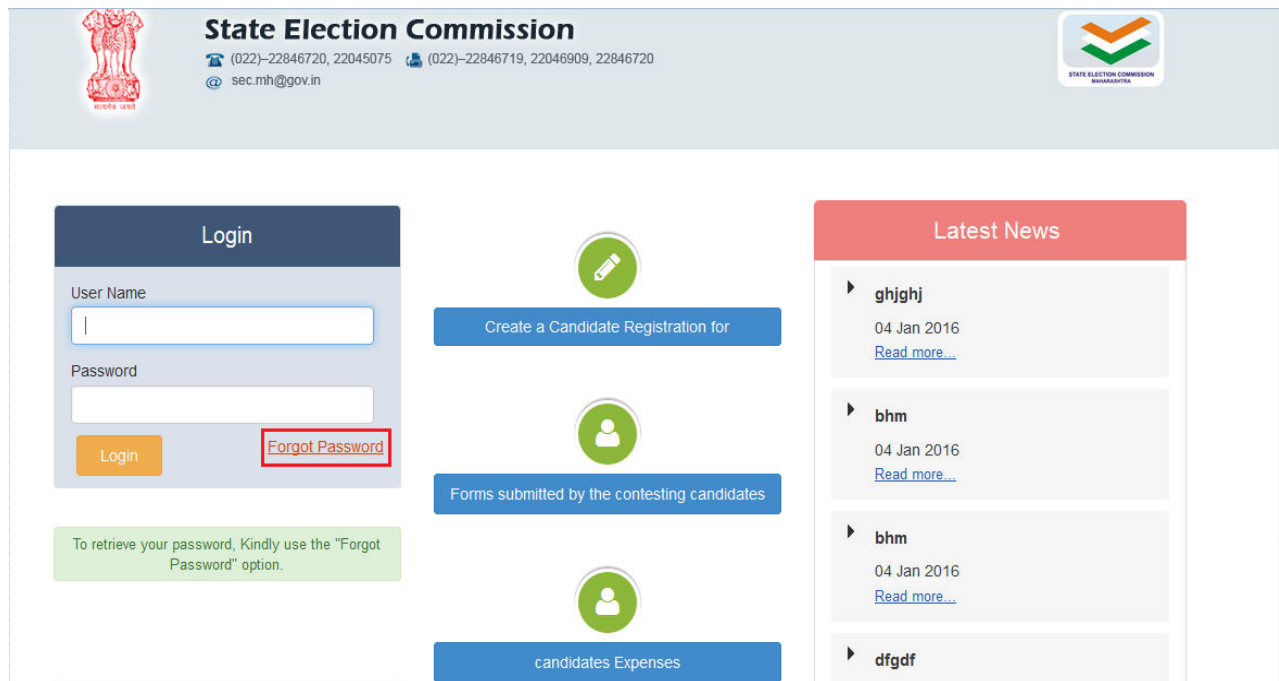


Forgot Password Guidance

Follow below steps to recover your password

1. Go to Homepage of panchayatelection and click on “Forgot Password” link as shown below



The screenshot displays the homepage of the State Election Commission. At the top, there is a header with the State Election Commission logo on the left, contact information in the center (phone numbers: (022)-22846720, 22045075 and (022)-22846719, 22046909, 22846720; email: sec.mh@gov.in), and the State Election Commission logo on the right. Below the header, the main content area is divided into three columns. The left column contains a 'Login' form with fields for 'User Name' and 'Password', a 'Login' button, and a 'Forgot Password' link highlighted with a red box. Below the form is a green box with the text: 'To retrieve your password, Kindly use the "Forgot Password" option.' The middle column features three blue buttons: 'Create a Candidate Registration for' (with a pencil icon), 'Forms submitted by the contesting candidates' (with a person icon), and 'candidates Expenses' (with a person icon). The right column is titled 'Latest News' and contains a list of news items with titles like 'ghjghj', 'bhm', 'bhm', and 'dfgdf', each with a date of '04 Jan 2016' and a 'Read more...' link.

2. Enter Following details as shown below

- UserName Or MobileNumber
- Type Of Local Body

Forgot Password

User Name/ Mobile No.: *

Type of Local body *

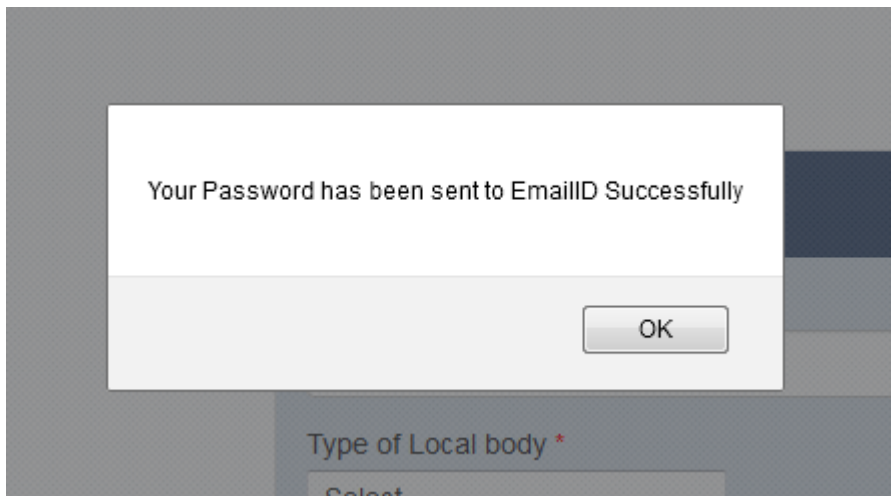
	Username
<input checked="" type="radio"/>	TestUser

Submit

3.Now Select UserName And click on “Submit” button.

4.After submitting below message will be displayed and you will Get UserName And Password on your registered mail or a message on your registered mobile number as per details provided.

5.Click on “OK” button to proceed further.



Thank You